

Puckett Surveyors, PLLC Professional Land Surveyors FIRM LICENSE NO. (P-1168)

PO Box 2351 Oxford, NC 27565 P. 919.528.8900

- Notes: 1) Area by Coordinate Method. 2) Distances are horizontal ground in U.S. Survey Feet. 3) All buildings, surface, subsurface improvements and utilities are not depicted hereon.

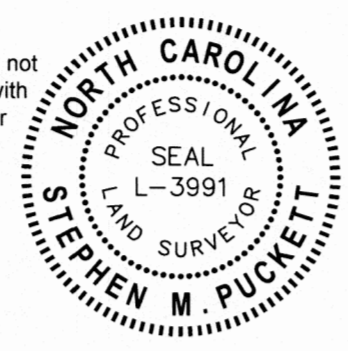
State of North Carolina, County of Granville. Aneta D. Blount, Review Officer of Granville County, certify that the map or plat to which this certification is affixed meets all statutory requirements for recording.

Surveyor's Certificate: I, Stephen M. Puckett, hereby certify that this plat is of a survey of another category, such as a recombination of existing parcels, a court-ordered survey or other exception to the definition of subdivision.

I, Stephen M. Puckett, certify that this plat was drawn under my supervision from an actual survey made under my supervision (deed description recorded in (references)); that the positional accuracy does not exceed 0.15' plus 150 ppm; that this plat was prepared in accordance with G.S. 47-30 as amended.

Professional Land Surveyor, License Number L-3991

- Legend (unless otherwise noted): 3/4" Pipe Found, #4 Rebar Set, Nail Set, Calculated Point, Concrete Monument, Right of Way, Centerline, Property Line, Overhead Utilities, Total Distance, Property Line Surveyed, Property Line Tie, Deed or Plat Line, Right of Way Line, Overhead Utility Line, Access Easement Line, Formerly, Angle Iron, Rebar Found, State Plane Coordinates.

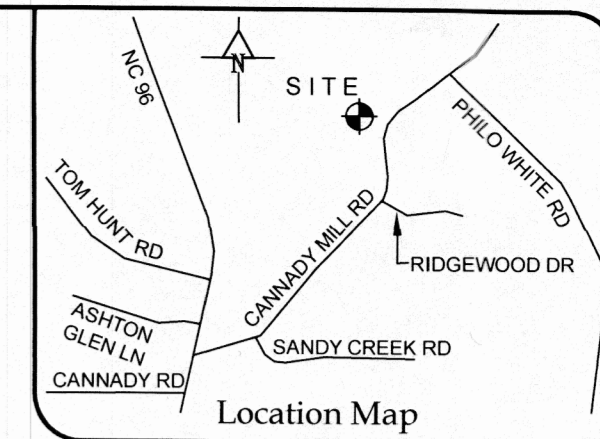
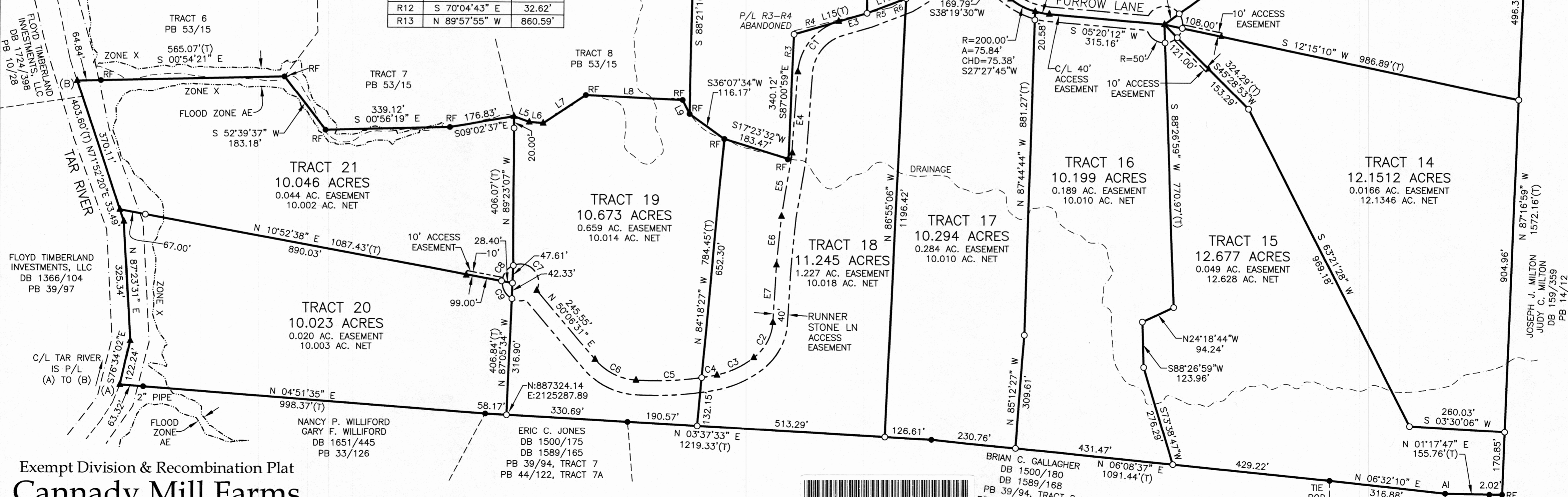


LINE TABLE with columns: LINE, BEARING, DISTANCE. Lists lines L1 through L26 with their respective bearings and distances.

CURVE TABLE with columns: CURVE, RADIUS, ARC LENGTH, CHORD BEARING, CHORD. Lists curves C1 through C9 with their geometric details.

LINE TABLE with columns: LINE, BEARING, DISTANCE. Lists lines E1 through E7.

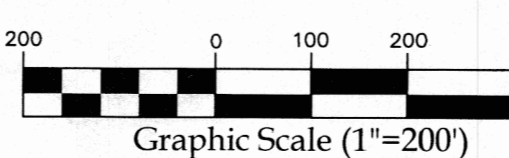
LINE TABLE with columns: LINE, BEARING, DISTANCE. Lists lines R1 through R13.



Site Data: 1) PIN: 182800653302, Record No. 3531. 2) Zone: AR-40. 3) Setbacks: Street 50', Side 15', Rear 25'. 4) Flood Zone AE mapped using NCFRIS data for FIRM 3720182800K dated 12/06/2019.

Exempt Division & Recombination Plat Cannady Mill Farms November 1, 2024 Brassfield Township, Granville Co., N.C.

References: DB 1955/252, DB 1955/921, PB 52/118, PB 53/15. Owner: JSW Partners, 10931 Strickland Rd Ste 111, Raleigh NC 27615.



Doc ID: 003895790001 Type: CRP. Recorded: 12/31/2024 at 11:44:54 AM. Fee Amt: \$21.00 Page 1 of 1. Granville County, NC. Kathy M. Taylor Reg of Deeds.