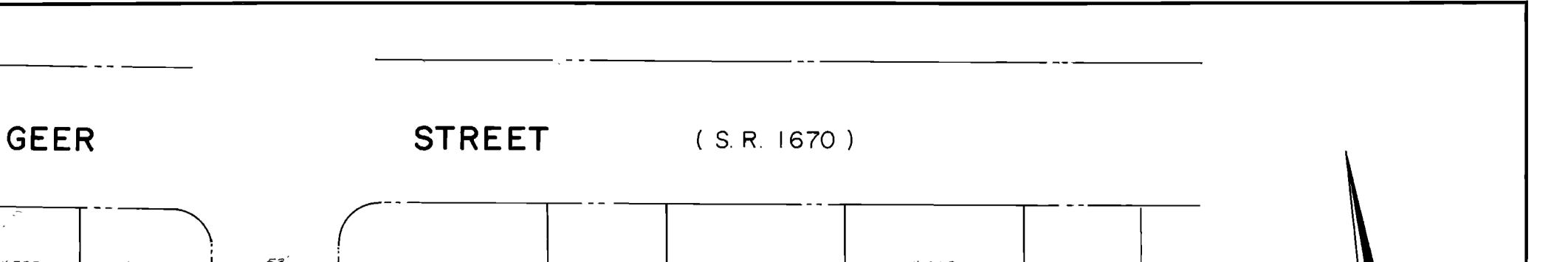


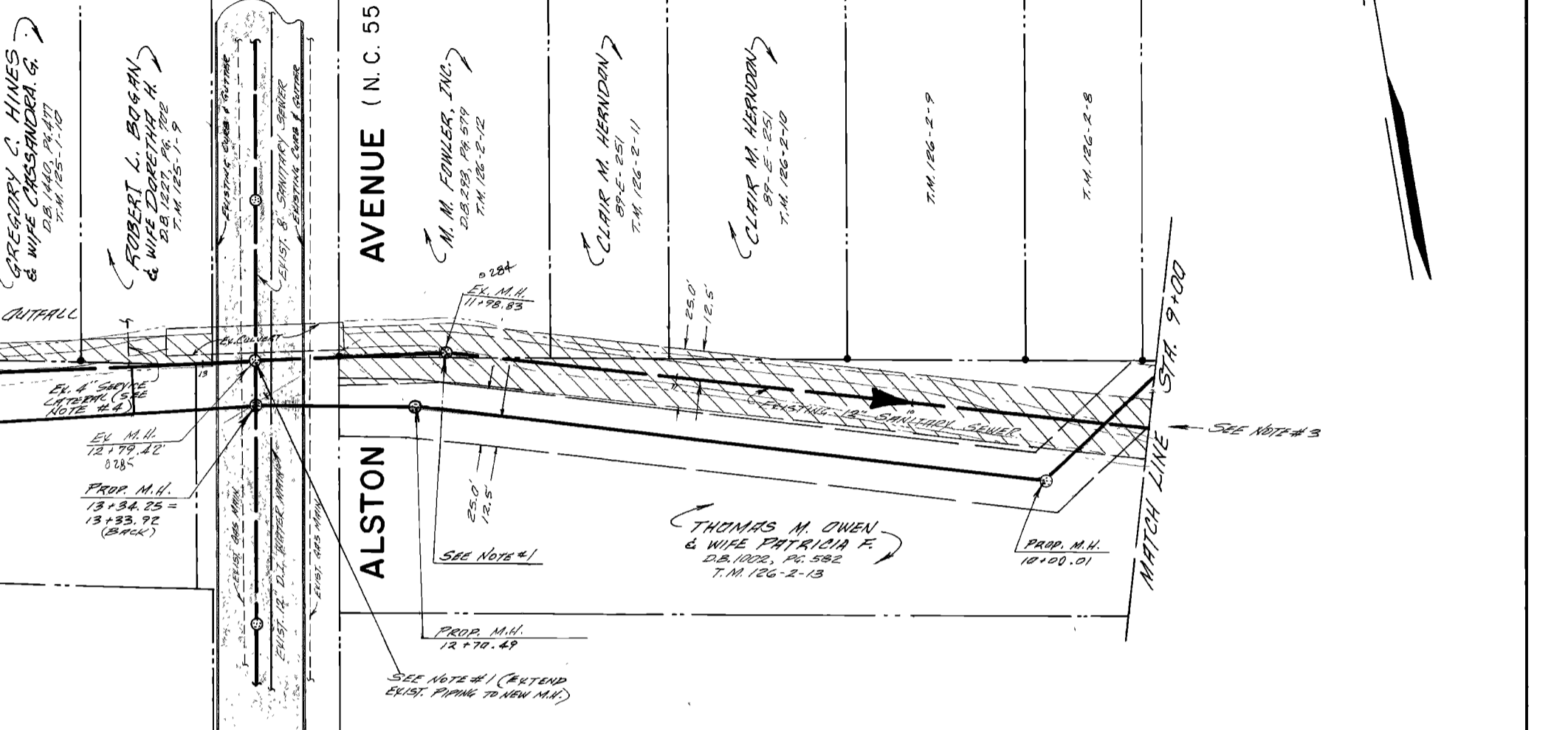
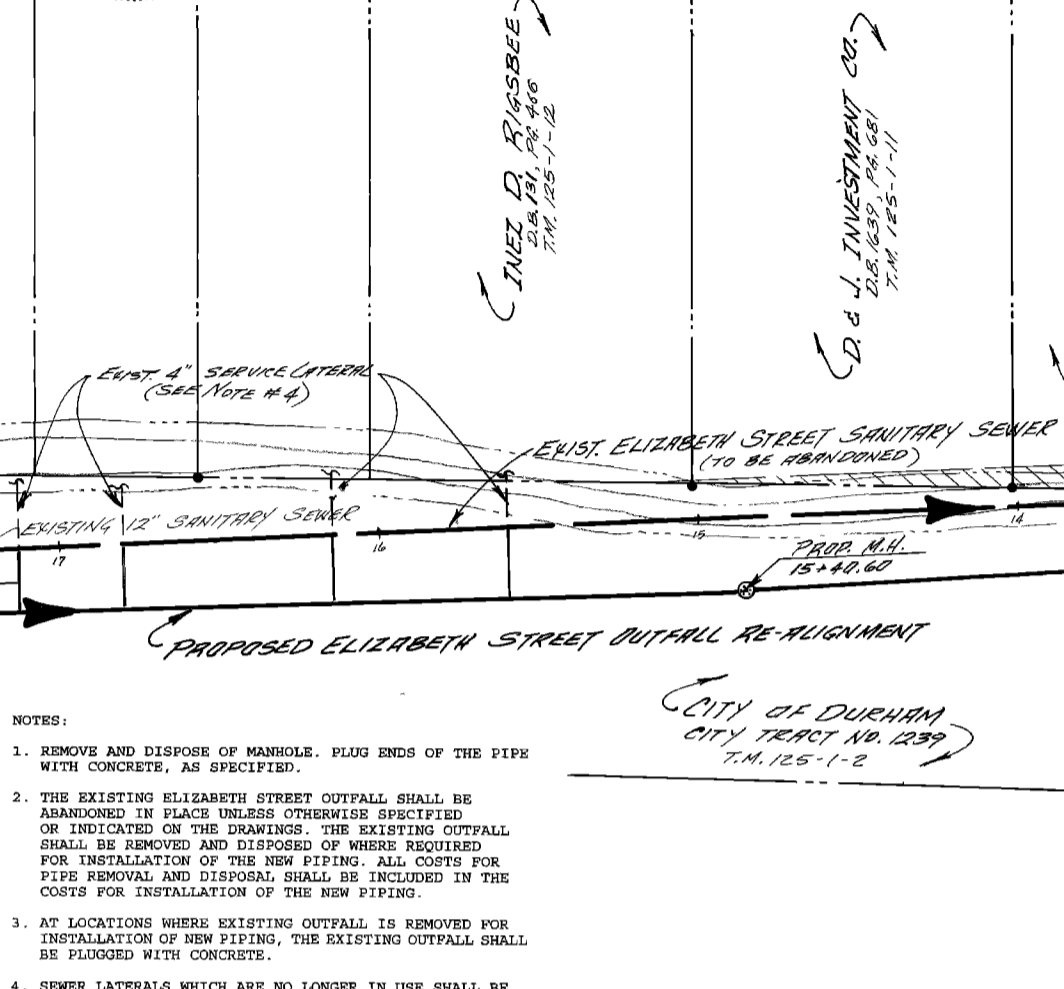
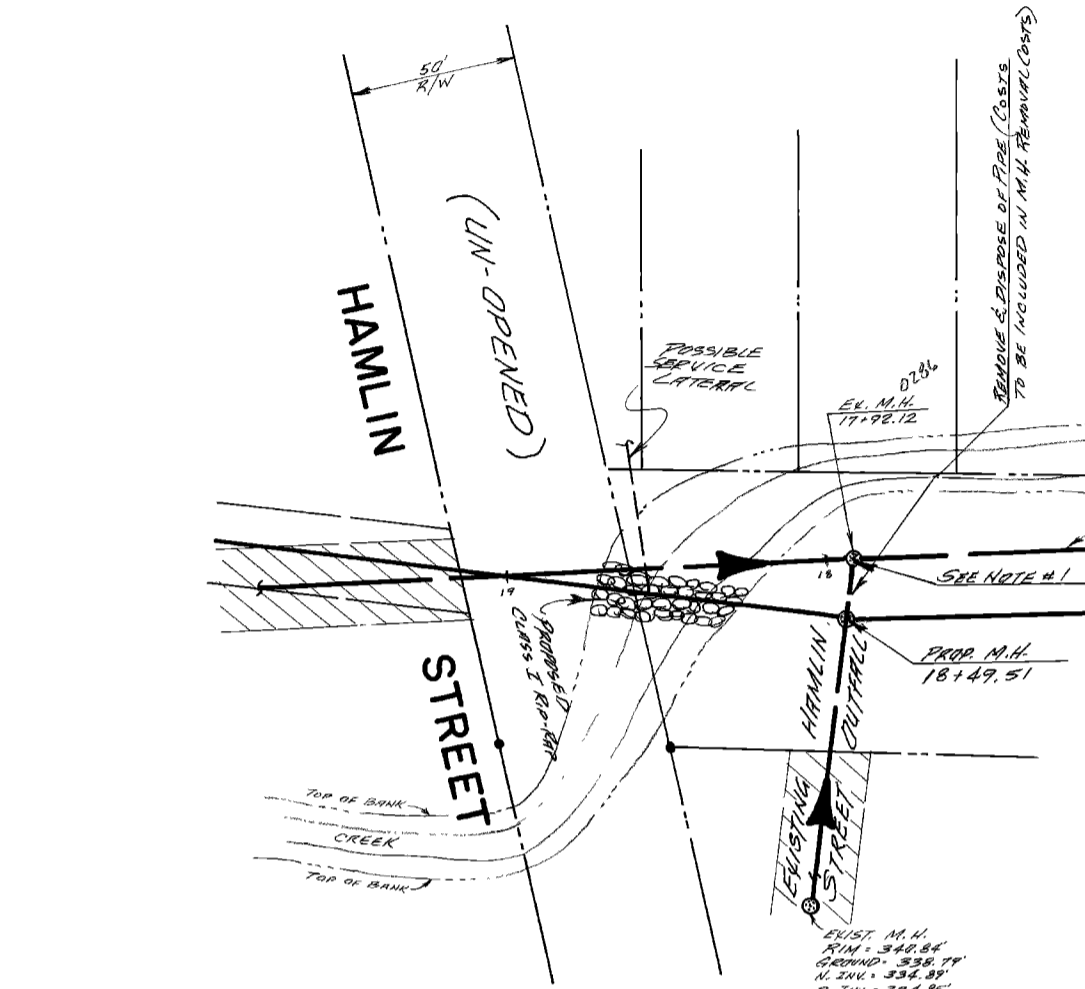
LEGEND	
○	POLE
●	IRON PIN
⊙	MONUMENT
⊖	STORM SEWER
—	CURB LINE
—	RIGHT-OF-WAY LINE
⊕	CATCH BASIN
⊕	WATER & SEWER MAINS
⊕	SEWER MANHOLE
⊕	WATER VALVE
⊕	HYDRANT

RIGHT OF WAY WIDTH	
—	WIDTH BETWEEN CURB FACES
—	CURB & GUTTER INSTALLED
—	PAVING INSTALLED
—	TYPE OF BASE
—	TYPE OF SURFACE
—	THICKNESS
—	RESURFACED

CITY OF DURHAM	
— APPROVED —	
W & S ENG. <i>7/24</i>	DATE <i>4/21/85</i>
DESIGN ENGR. _____	DATE _____
CONST SUPERVISOR _____	DATE _____
STREET ENGR. _____	DATE _____
ASST. CITY ENGR. _____	DATE _____



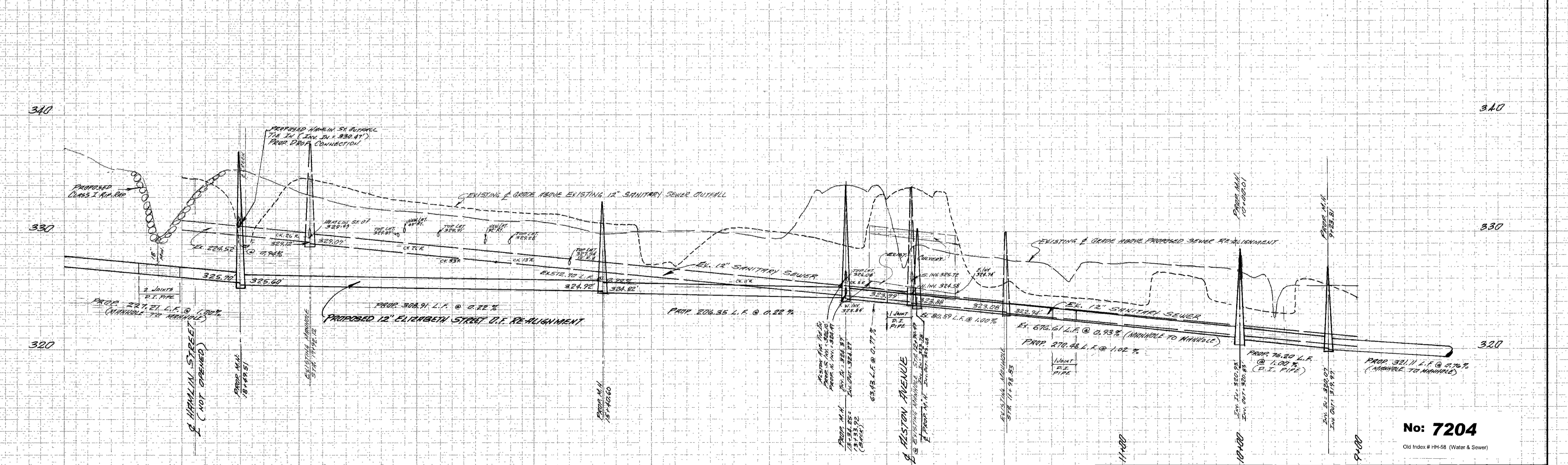
B.M. ELEV.: SPIKE IN POLE, W/S HAMLIN AVENUE @ OUTFALL ELEV = 334.05
 B.M. ELEV.: SPIKE IN 24" RED CHAIN, SOUTH OF EXIST. MANHOLE STA. 17+92.12 ELEV = 336.84



- NOTES:
1. REMOVE AND DISPOSE OF MANHOLE. PLUG ENDS OF THE PIPE WITH CONCRETE, AS SPECIFIED.
 2. THE EXISTING ELIZABETH STREET OUTFALL SHALL BE ABANDONED IN PLACE UNLESS OTHERWISE SPECIFIED OR INDICATED ON THE DRAWINGS. THE EXISTING OUTFALL SHALL BE REMOVED AND DISPOSED OF WHERE REQUIRED FOR INSTALLATION OF THE NEW PIPING. ALL COSTS FOR PIPE REMOVAL AND DISPOSAL SHALL BE INCLUDED IN THE COSTS FOR INSTALLATION OF THE NEW PIPING.
 3. AT LOCATIONS WHERE EXISTING OUTFALL IS REMOVED FOR INSTALLATION OF NEW PIPING, THE EXISTING OUTFALL SHALL BE FLOODED WITH CONCRETE.
 4. SEWER LATERALS WHICH ARE NO LONGER IN USE SHALL BE ABANDONED IN PLACE. ACTIVE LATERALS SHALL BE CONNECTED TO THE NEW OUTFALL.

SEE SHEET NO. HH-59

SEE SHEET NO. HH-57



No: 7204
 Old Index # HH-58 (Water & Sewer)

SYSTEM	DESIGN BY:	DRAWN BY:	CONSTRUCTION DATE:	REVISIONS
WATER				
SAN. SEWER		CB		11-03-95
STREET IMP				

CITY OF DURHAM
 ENGINEERING DEPARTMENT
ELIZABETH STREET OUTFALL
 STATION 9+00.00 TO HAMLIN STREET
 SCALE: HOR. 1" = 40', VER. 1" = 4'

SHEET NO.: **HH-58**